

LOG & TIMBER HOME LIVING

*home
for good*

BATHS
THAT
MAKE A
SPLASH

WHY RANCHES WORK SO WELL

- Single-level simplicity
- Innovative designs
- Perfect for retirees

Kitchen Combos We Love

FULL HOUSE

Design Your Home for Multiple Generations

+ OH-SO-EASY UPKEEP

**28
FLOOR
PLANS**
find the one
that fits
your family!

RACE TO THE FINISH

A pastoral setting in thoroughbred country provides the perfect reason for a retired couple to return to their childhood home.



66

By Adam Headley | Photography by Allen Mowery



The exterior of the Wasniewski home features timbers of eastern white pine. The siding is stained in two coats of a classic barn-red shade with peaks and trimwork in jet black. Since the home was built on pastureland, the couple considers the red exterior an appropriate homage to the land's lineage.

As their careers wound down and retirement approached, Dean and Annemarie Wasniewski returned to their roots.

After years in sales, marketing and administration had seen them relocate to New England more than a quarter-century ago, they remembered where they both grew up and had raised their son, Toby, and daughter, Erica. “We wanted to move back close to our families, who live in Lake George and Schenectady. Saratoga lies square in the middle of all,” says Dean.

So, 32 acres of spectacular land in the Saratoga-Stillwater area of upstate New York, with its centerpiece — an 8-acre pasture — provided the perfect setting to build the home of a lifetime. “We knew right away this was the place to build a special house,” Dean gushes. “We’re avid horse race fans, and Saratoga Race Course is the oldest thoroughbred track in the United States. So this seemed like the right spot for our timber home. Our love for horses is woven throughout our home, as are our fond memories of previously living on the beach and Cape Cod.”

A friend had recently built a 5,000-square-foot log home in Somerset, Pennsylvania, and after visiting a few times, Dean and Annemarie decided to follow up on their recommendation to work with Timberhaven Log & Tim-

right The spacious great room flows seamlessly into the kitchen and dining room, allowing those preparing meals to engage with others in the seating area. The open floor plan also allows larger groups to circulate freely. The floor-to-ceiling granite fireplace is a masterpiece. Mined locally, the granite is called “Ticonderoga,” in reference to an area just north of Saratoga. The finely crafted mantel is locally harvested black walnut.



above The elegance of an evening sunset enhances the inviting glow and rustic charm of the Wasniewski home in Saratoga, New York. The symmetry of the eastern white pine timbers provides a stunning yet welcoming ambiance. The couple enjoy contrast, and the transitions from light to dark, both inside and out, splendidly capture their vision.

ber Homes. From the beginning, the Wasniewskis knew what they wanted. Annemarie envisioned a sunroom for hours of reading, while Dean wanted to nurture his love of the outdoors and pay tribute to his father’s passion for big game with a trophy room.

“We planned a ranch all along,” they recall. “We have a large family

of all ages, including great-grandma, and we also have many family gatherings, so the one level works well. Our friends, the Sacchini family, hooked us up with Lynda Tompkins, and we took a trip to Timberhaven to share our ideas and see how they could customize a timber home for us.”

Lynda, a principal at Middleburg,



Pennsylvania-based Timberhaven, welcomed the opportunity to work with the Wasniewskis. The consultative process was immediately energized and produced a blueprint for success.

“Through conversations in regard to what they wanted to achieve and listening to ‘how they wanted to live,’ in their home, we were able to identify the

specific design and aesthetic elements,” Lynda explains. “We utilized concepts from several past houses that lent themselves to the project, and ultimately inspired a new model, the ‘Saratoga,’ for Timberhaven. We then customized this new model for the Wasniewskis based on their specific design goals. They shared what they wanted – including

single-floor living with an open entry, great room and galley-style kitchen.”

Dean and Annemarie admit that their knowledge of log and timber homes was limited when they first approached Timberhaven. Lynda and company set the couple at ease, providing numerous design and layout suggestions while noting the features



and benefits of each element. “Timberhaven was incredible to work with,” they say. “Lynda streamlined the entire process. Adding general contractor Mike Lewis, who knew both the Timberhaven product and timber home building, closed the loop on all of it.”

The complementary match of Timberhaven and Mike’s building outfit,

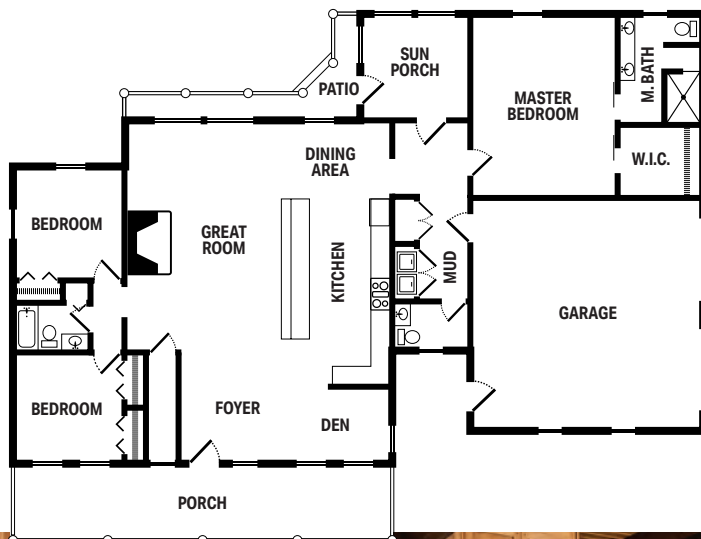
High Peaks Log Homes, located in nearby Chestertown, New York, indeed pulled the entire project together. “Timberhaven was able to provide the complete materials package supported by Mike, who is our local representative and could provide the construction services as well,” Lynda remarks.

“Once Lynda referred us to High Peaks, we were ‘off to the races’ literally!” Dean says with a laugh.

In his role as general contractor, Mike pulled permits and directed the Wasniewskis to local suppliers for electrical and plumbing fixtures. “Dean and Annemarie were very proactive with ideas and how to proceed,”



left The vast cabinet space and long island make the kitchen a fabulous place for a gourmet cook. The appliances are all black matte, matching the countertops. For a farmhouse feel, the island pendants are converted milk cans.



above Adjacent to the kitchen, the dining area is cozy and convenient, perfect for an intimate dinner but accommodative for larger gatherings as well. The cabinetry, designed and built by the Wasniewskis' son-in-law, Jared Phillips, owner of nearby Saratoga Custom Cabinets, is pure artistry in sappy cherry and curly maple that include knots, holes and distressed boards for character.

Mike comments. "They were familiar with building and worked diligently to make decisions to keep the project moving."

Construction got underway in November 2019. Framing began three months later, and the Wasniewskis moved into their new timber home in mid-October 2020. Despite the impact

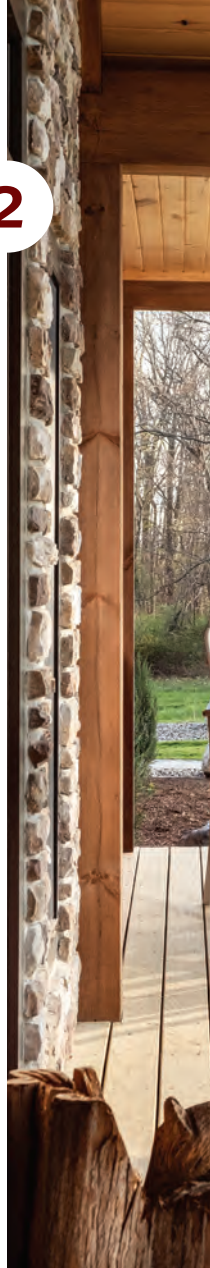
of the COVID-19 pandemic, the work progressed.

"There were some delays due to COVID-19, but keeping the subcontractors informed allowed the build to stay mostly on course," Mike shares. "It is critical, especially with the delays we are experiencing due to COVID-19, to make decisions well in advance."

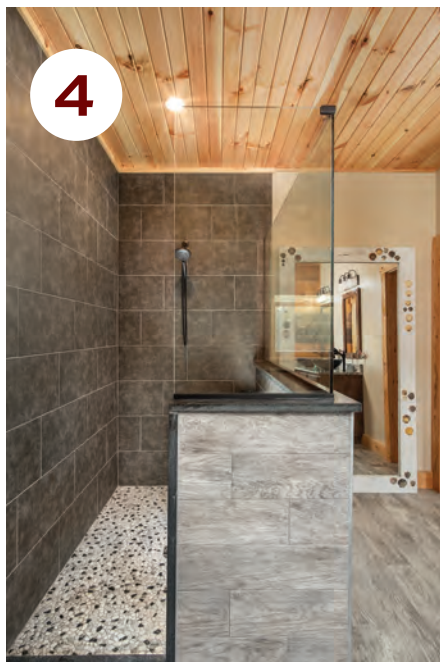
Dean and Annemarie agree. "Fortunately, the town building inspector did not shut us down, as we had a small building crew," they reflect. "Also, we were very fortunate that no one on our crew came down with COVID. The project could not have taken place without great partners. Timberhaven and High Peaks were just that. We feel blessed."

DEAN AND ANNEMARIE'S
special
spaces

2



1 Ambient light floods the sunroom, a retreat that Annemarie uses for reading. The expansive windows also allow lovely vistas of the nearby wooded area. Natural springs abound, and a stream runs along the base of a nearby hill. A variety of wildlife, including deer, turkeys, coyotes and fisher cats, are drawn to the water. **2** A quartet of chairs and a small table provide lovely space for friends and family to relax on the front porch, which generously extends along the length of the home. Dean and Annemarie lovingly re-seeded nearly three acres to return the pasture to its original beauty, and a local farmer, managing 40 head of cattle, cuts the hay twice a year for his herd. **3** The exposed beams found throughout the home are highlighted in the master bedroom. They employed three colors and five different blends on the 1-by-12 circle-sawn shiplap to create an appealing visual effect. **4** The spacious walk-in shower displays a seamless combination of wood and tile; rustic and contemporary elements. **5** A well-appointed office includes plenty of natural light and beautiful views of the surrounding pasture and wooded landscape. The Wasnievskis' timber choice was laminated, engineered eastern white pine, which sands, stains and seals to an attractive finish. **6** Measuring a generous 20-by-24 feet, the patio invites family and guests to linger any time of day, morning to evening. The 16-foot circular fire pit is just right for gathering during a summer sunrise or a cool, colorful autumn evening. The Wasnievskis fashioned stools for the fire pit and a pool table from beach logs.



HOME DETAILS

SQUARE FOOTAGE

2,550

BEDROOMS

3

BATHS

2 full, 1 half

TIMBER PROVIDER

TIMBERHAVEN LOG &
TIMBER HOMES

timberhavenloghomes.com

BUILDER

HIGH PEAKS LOG HOMES

highpeaksloghomes.com

